



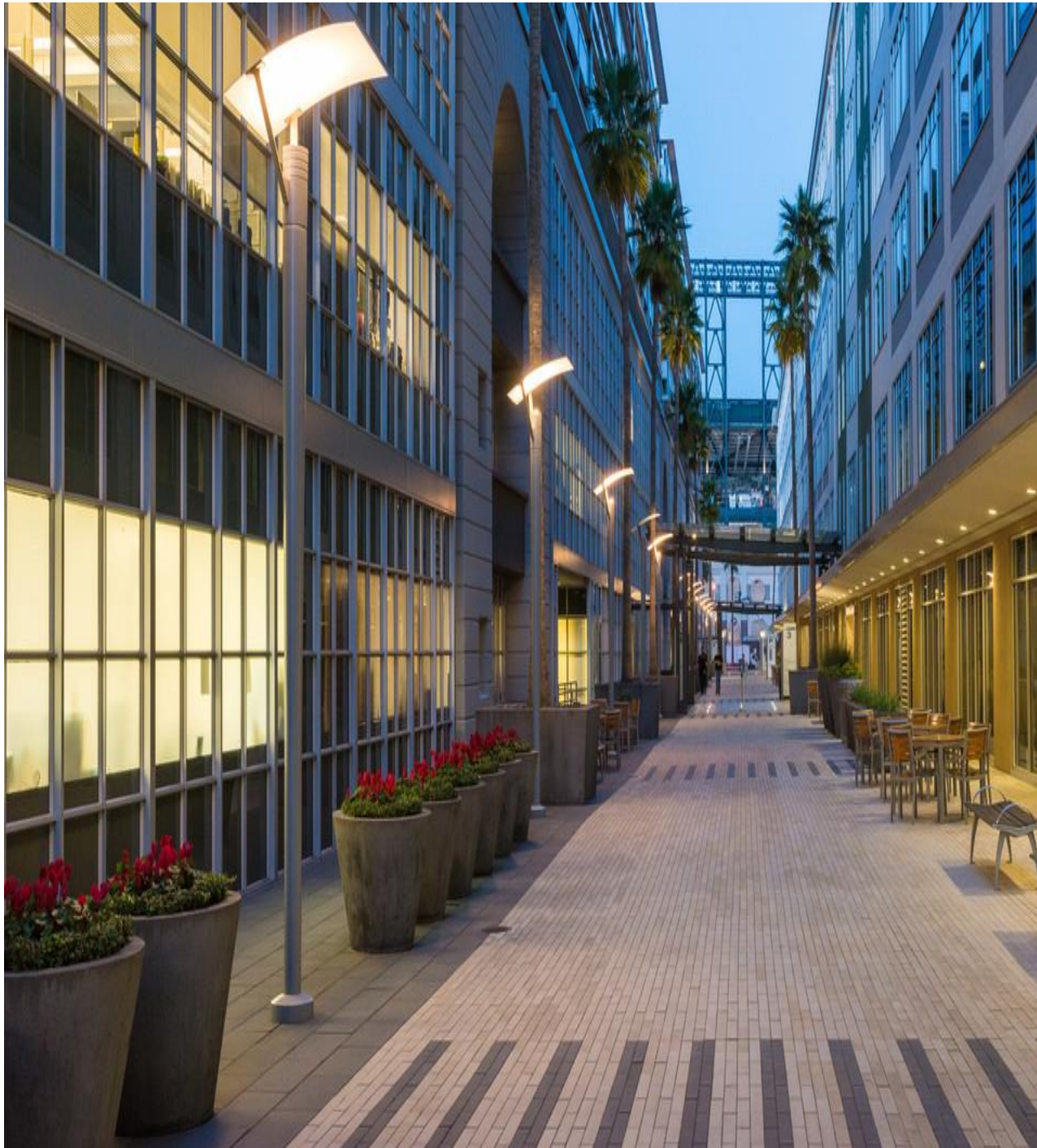
Homeland Lighting Solutions

Ultimate source for innovative lighting solutions

Get to
Discover >

2019

Whether it is Lighting innovations that brightens any interior space, or elegantly designed decorative light to enhance everyday space, or specifically designed to put light on outdoor tasks and to enhance safety, security and enjoyment



- 3 ARIES ULTRA THIN DOWNLIGHTS
- 4 CRUX DOWNLIGHTS
- 5 HYDRA COMMERCIAL INDOOR LIGHTS
- 6 VIRGO TRACK LIGHTS
- 7 FERFER DECORATIVE LIGHTS
- 8 LEO INDUSTRIAL LIGHTS
- 9 CYGNUS AREA & SITE OUTDOOR LIGHTS
- 10 RIGEL DECORATIVE OUTDOOR LIGHTS
- 11 SIGNAGE & EMERGENCY LIGHTS

ARIES THIN PANEL DOWNLIGHT



Fig. 1



Fig. 2



Fig. 3



Fig. 4



The ARIES series are ultra-thin high energy efficient LED downlights. The ARIES series are quick and simple to install from below the ceiling with as little as 2-inch plenum clearance. The ARIES series are suitable for residential, hotels, exhibition hall, retail, religious, conference rooms, libraries and recreational lighting applications.

Features

- Ultra slim LED wafer
- >80 CRI
- 3000K – 6000K CCT
- 85 – 90 lm/w
- 110-240 VAC input voltage
- White finish
- Easy to install
- CE Marked

Ordering Information

Model	Description	Size	Wattage	Lumen	Illustration
HD20367	Slim LED panel downlight	Round: DIA 5 inch DIA 6 inch Square: 5x5 inch 6x6 inch	9 W 12 W	720 lm 920 lm	Fig. 1, Fig. 3
HD12661	Ultra slim LED panel downlight	Round: DIA 3 inch DIA 5 inch Square: 3x3 inch 5x5 inch	8W 16W	680 lm 1360 lm	Fig. 4
HIP14810	Backlit LED slim panel downlight	Round: DIA 2.7 inch DIA 3.9 inch Square: 2.7x2.7 inch 3.9x3.9 inch	7W 16W	630 lm 1440 lm	Fig. 2

CRUX DOWNLIGHT SERIES

The CRUX series consists of high energy efficient LED downlight with aesthetically pleasing designs. The design of the CRUX downlight series incorporates precision optics that provides dramatic illumination offering a wide range of beam distributions that give lighting designers the means to realize their lighting vision. They are suitable for commercial, hotels, residential, retail and religious lighting applications.

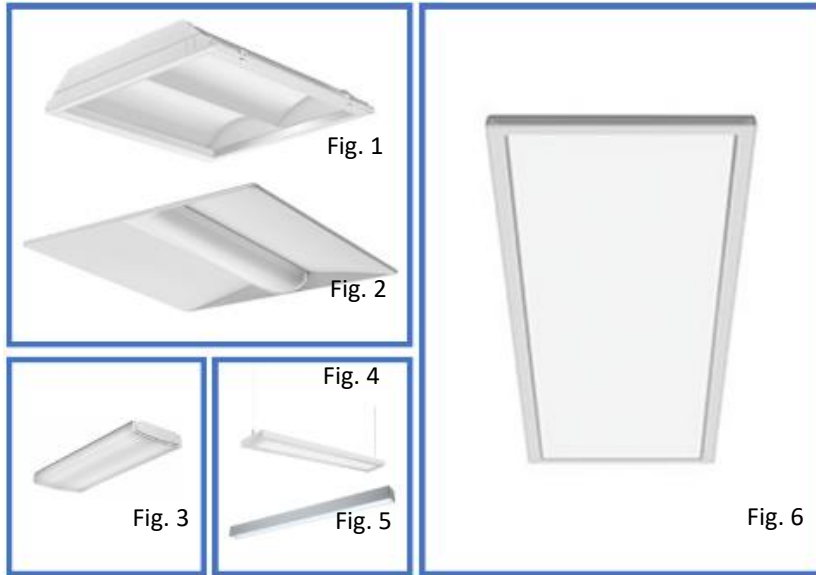
Features

- >80 CRI
- 2700K – 5000K CCT
- 90 – 105 lm/w
- 110-240 VAC input voltage
- White finish
- Easy to install
- UL, CSA listed, CE Marked



Ordering Information

Model	Description	Size	Wattage	Lumen	Illustration
AC12019	General purpose LED downlight	2–4 inch round & square	9W 10W	950 lm 1050 lm	Fig. 1, Fig. 6, Fig 5
AC22019	High ceiling LED downlight	4-9 inch round & square	30W 50W	3000 lm 5000 lm	Fig. 3
AC32019	Cylinder LED downlight	4-8 inch cylinder	30W 36W 48W	2500 lm 3000 lm 4500 lm	Fig. 2
AC42019	High contrast LED downlight and ascent light	2-4 inch round and square	10W 20W 30W 40W 50W	750 lm 1500 lm 2500 lm 3000 lm 4500 lm	Fig. 4



HYDRA SERIES

The Homeland Lighting Solution HYDRA series of commercial indoor luminaires include high energy efficient LED troffers, flat panels, linear and wraparound. These luminaires offer the flexibility and reliability required to brighten any commercial building interior space. The contemporary design makes the HYDRA series the most suitable ambient lighting solution for office, banking, education, retail, healthcare and other commercial buildings.

Features

- >80 CRI
- 3000K – 5000K CCT
- 100 – 125 lm/w
- 110-240 VAC input voltage
- White finish
- Easy to install
- UL, CSA listed, CE Marked

Ordering Information

Model	Description	Size	Wattage	Lumen	Illustration
NGC3402	LED troffers	1x2 inch 1x4 inch 2x2 inch 2x4 inch	23W 28W 35W 40W	3000 lm 3500 lm 4000 lm 5000 lm	Fig. 1, Fig 2
NGC3621	LED flat panel	1x4 inch 2x2 inch 2x4 inch	35W 60W	4200 lm 6000lm	Fig. 6
NGC3923	LED linear fixtures	4 ft	25W 32W	3000 lm 4000 lm	Fig. 4, Fig. 5
NGC3523	LED wraparound	2 ft 4ft	17W 32W	2000 lm 4000lm	Fig. 3

VIRGO TRACK LIGHTS

The Homeland Lighting VIRGO series of fresh and innovative LED track lights combine aesthetics with superior functionality for applications such as specialty retail, grocery, galleries, museums, hospitality, residential and educational environments.

Features

- >80 CRI
- 2700K – 5000K CCT
- 53 and 100 lm/w
- 110/240 VAC input voltage
- White, black and brush nickel finish
- Easy to install
- CE Marked, ETL listed



Fig. 1



Fig. 2



Fig. 3



Fig. 4



Ordering Information

Model	Description	Size	Wattage	Lumen	Illustration
M49	Gavel LED track light	5.4 x 3.0 x 6.3 inch	8.3W	440 lm	Fig. 1
M58	Cylindrical LED track	2.4 Dia x 6.5 inch	30W	3000 lm	Fig. 2, Fig. 3
M 59	Two head track light	2.4 Dia x 6.5 inch	70W	7000 lm	Fig. 4

FERFER DECORATIVE LIGHTS

The LEO series are sophisticated designed, high quality and intelligent decorative LED lights. This series include pendants, chandeliers, ceiling mounts and wall mount features and shapes with sleek new way to bring a splash of vivid color and attitude to any space.

Features

- >80 CRI
- 3000K – 6500K CCT
- 60 – 90 lm/w
- 110-240 VAC input voltage
- Brush aluminum, polish brass and polish chrome finish
- Easy to install
- UL, CSA listed



Fig. 1

Fig. 2

Fig. 3

Fig. 4



Ordering Information

Model	Description	Shape	Wattage	Lumen	Finish	Illustration
FER1920	LED trio pendant decorative light	Sphere shaped Flute shaped Arch shaped Cylindrical shaped	12W	560 lm	Brush aluminum Brush brass	Fig. 2
FER1925	Delano Cylinders pendant mount LED decorative light	Delano Cylinder shaped	45W	2100 lm	Polish brass Polish nickel	Fig. 3
FER1930	LED bowl pendant decorative light	Bowl shaped	64W	4000 lm	Brush aluminum Brush brass	Fig. 4
FER1935	Cylindrical LED wall sconce with Vertical Accent Bars	Sectioned cylinder	12W	561 lm	Brush aluminum Polish brass Polish chrome	Fig. 1

LEO INDUSTRIAL LIGHTS

The LEO series of high energy efficient industrial high bay luminaires designs offer outstanding performance at lowest possible cost. Our portfolio of LED industrial lights are specified for warehouses, heavy industrial facilities, manufacturing, food processing and other demanding environments

Features

- >80 CRI
- 4000K – 5000K CCT
- 100 - 180 lm/w
- 110-240 VAC input voltage
- Easy to install
- CE Marked, CSA listed



Ordering Information

Model	Description	Size	Wattage	Lumen	Illustration
BL12019	Industrial LED high bay	24 x 15 x 2.4 inch 48 x 15 x 2.4 inch	100W	13,000 lm	Fig. 1
BL22019	Industrial LED high bay	45 x 15.8 x 3.3 inch	122W 192W	15,000 lm 24,000 lm	Fig. 2
BL32019	Industrial LED high bay	25.6 x 20.7 x 2.8 inch	100W 205W	18,000 lm 30,000 lm	Fig. 3
BL42019	Industrial LED round ray	11.4 Dia x 6.5 inch	100W	14,000 lm	Fig. 4
BL52019	Industrial LED strip	47.2 x 3.1 x 2.3 inch	32W	4,400 lm	Fig 5

CYGNUS AREA & SITE OUTDOOR LIGHTS

Homeland Lighting Solutions LED area and site lighting products are designed for illuminating parking lots, residential streets, walkways, mixed-use and surrounding areas. These high energy efficient products are specifically designed to put light on outdoor tasks and to enhance safety, security and enjoyment

Features

- >80 CRI
- 4000K – 6500K CCT
- 120 - 135 lm/w
- 110-240 VAC input voltage
- IP65 ingress protection rating
- Easy to install
- Black and silver finish
- UL, CSA listed, CE Marked



Fig. 1



Fig. 3



Fig. 2



Fig. 4



Ordering Information

Model	Description	Size	Wattage	Lumen	Illustration
CY22019	LED outdoor area & site light	17.7 x 9.4 x 3.1 inch 19.7 x 10.2 x 3.1 inch	60W 90W	8,400 lm 12,600 lm	Fig. 1
CY12019	LED outdoor area & site light	33 x 13 x 7.5 inch	85W	11,000 lm	Fig. 2
CY42019	LED outdoor area & site light	25.4 x 13.5 x 3.1 inch	135W	13,500	Fig. 3
CY32019	LED outdoor area & site light	23.9 x 11.1 x 3.5 inch 25.4 x 15.9 x 3.5 inch	100W 100W	13,500 lm 13,000 lm	Fig. 4

CANIS WALL MOUNT OUTDOOR LIGHTS

The CANI series of high energy efficient LED wall-mounted outdoor luminaires offer bright, uniform distribution for building exteriors, facades and entrances. These outdoor products are suitable for pedestrian and parking areas, walkways, garages, stairways, loading docks and other outdoor spaces requiring additional safety and security

Features

- >80 CRI
- 4000K – 6500K CCT
- 67 - 135 lm/w
- 110-240 VAC input voltage
- IP65 - 66 ingress protection rating
- Easy to install
- CE Marked, CSA listed



Ordering Information

Model	Description	Size	Wattage	Lumen	Illustration
SA 12019	LED outdoor wall mount light with dark bronze and white finish	9.3 x 4.3 Dia inch	14W	947 lm	Fig. 1
SA 22019	LED outdoor wall mount light with black, dark bronze and silver finish	16.4 x 7.1 x 9.3 inch	69W	8,000 lm	Fig. 3
SA 32109	LED outdoor wall mount light with black finish	8.6 x 7.5 x 1.2 inch	40W	3,600 lm	Fig. 2
SA 42019	LED outdoor wall mount light with black finish	14.3 x 9.2 x 7.4 inch	60W	13,500 lm 13,000 lm	Fig. 4

RIGEL DECORATIVE OUTDOOR LIGHTS

Our RIGEL series of outdoor decorative lights include LED in-grade and bollard lights designed to match any architectural space or meet a specific functional need. These innovative decorative outdoor lights provide uniform illumination and are suitable for illuminating walkways, pedestrian areas, plazas, building facades, walls, trees and landscaping applications.

Features

- >70 CRI
- 3000K – 6500K CCT
- 70 - 86 lm/w
- 110-240 VAC input voltage
- IP67 ingress protection rating
- -20°C to 45°C operating temperature
- UL, CSA listed, CE Marked



Fig. 1



Fig. 3



Fig. 2

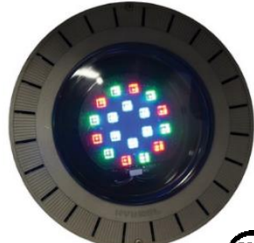


Fig. 4



Ordering Information

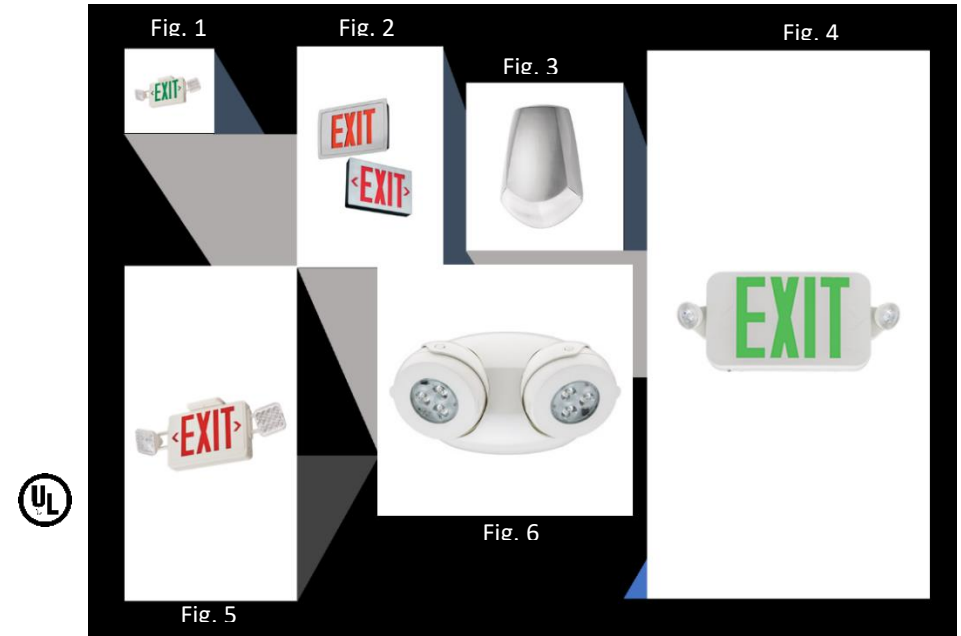
Model	Description	Size	Wattage	Lumen	Illustration
RG12019	LED outdoor in-grade light	7 Dia inch	14W 35W	700 lm 1,200 lm 2,500 lm	Fig. 3
RG22019	LED outdoor in-grade light	4 Dia inch	36W	550 lm	Fig. 1
RG32019	LED outdoor in-grade with changing RGB colors	11.4 Dia inches 12 Dia inches	36W 47W	2,500 lm 900 lm	Fig. 4
RG42019	LED outdoor bollard lights	20 Dia x 36 inch	32W 72W	1,500 lm 1,500 lm	Fig. 2

SIGNAGE & EMERGENCY LIGHTS

Our portfolio of high-performance emergency light and signage products are designed for the singular purpose of protecting life in emergency situations. These products comply with NFPA (National Fire Protection Association) standard 101 (Life Safety Code) and provide the reflexivity required for modern architectural applications in aesthetically pleasing design.

Features

- LED lights
- Maintenance free sealed lead acid or nickel-cadmium batteries
- Build to last
- 120/277 VAC input voltage
- Conveniently located test switch
- Easy to install
- UL listed,



Ordering Information

Model	Description	Size	Emergency operation time	Wattage	Illustration
EM12019	LED exit and emergency light combo with red and green text color	12 x 9 x 4.5 inch	120 Minutes	3.8 W	Fig. 1, fig. 5
EM22019	Low profile LED emergency light and exit combo with red and green text color	11.6 x 7.3 x 4.3 inch	120 Minutes	1.7W	Fig. 4
EM32019	Architectural emergency light	9.5 x 6.5 x 2.8 inch	120 Minutes	1.4W	Fig. 3
EM42019	Bug eye style emergency light	13.4 x 5.9 x 3.7	120 Minutes	3.2W	Fig. 6
RG42019	LED exit in die cast aluminum housing	11.4 x 7.9 x 2.3 inch	120 Minutes	11.1W	Fig. 2

Homeland Lighting Solutions

Ultimate source for innovative lighting solutions

